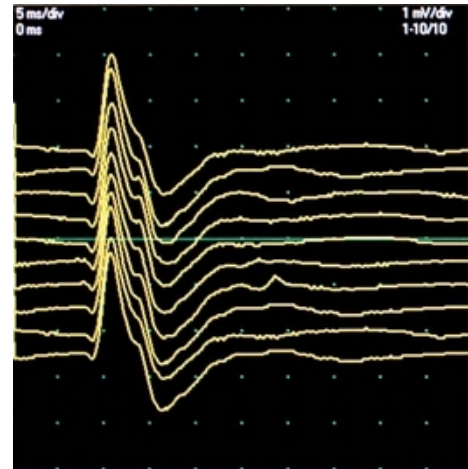


## MEP Monitor, 1 channel EMG amplifier



- 1 channel EMG amplifier to be mounted on the back of the MagPro system.
- Measurement of Motor Evoked Potentials (MEP).
- Specially designed for determination of Motor Threshold.



### Technical Data

Dimensions	(HxWxD:) 184 x 94 x 40mm
Weight	0.7kg
Number of Inputs	1 input protected against electro-static discharge. Balanced inputs. 1 pc. 5-pole DIN 240° connector for electrode cable
Sound	Output for external loudspeaker, 3.5mm jack.
Patient Safety	EMG channel galvanically isolated 1.5 kV RMS
Input Impedance	200 M $\Omega$ // 100 pF (balanced), >1000 M $\Omega$ // 50 pF (common mode)
Noise Level	Typical 0.6 $\mu$ V <sub>rms</sub> at bandwidth 2 Hz to 20 kHz and shorted input
Common Mode Rejection Ratio	From surface electrode, through cable and amplifier: >55 dB. Direct: >100 dB
Isolation Mode Rejection Ratio	From input to power ground: >160 dB
Sensitivity Factors	100, 200, 500 $\mu$ V/Div, 1, 2, 5, 10 mV/Div
Time Scales	1, 2, 5, 8, 10 ms/Div
Trigger Mode	Level, Autotrig on stim
Lower Frequency Limits (-3dB): DSP	1, 2, 5, 10, 20, 50, 100 Hz,
Upper Frequency Limits (-3dB): DSP	1, 2, 5, 10, 20 kHz,
Anti Aliasing	20 kHz (-3 dB), 1 <sup>st</sup> order
Sampling	100 ks/s, 16 bit
<b>Ordering Number</b>	9016C070-